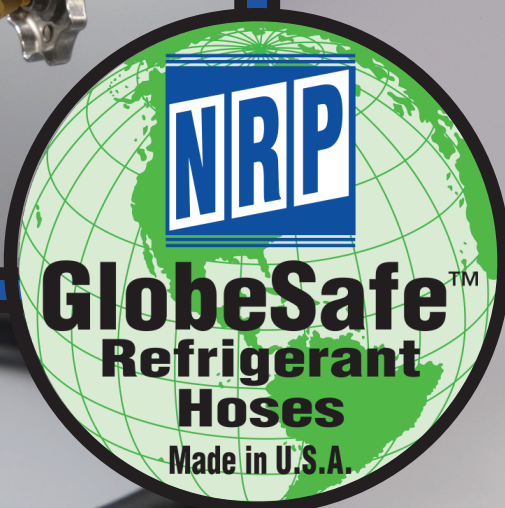




NATIONAL  
REFRIGERATION  
PRODUCTS

# Product Guide 2024





# PREMIUM REFRIGERANT CHARGING & VACUUM HOSES



- All assemblies and components are made in the USA
- Rated 800 PSI (55 bar) maximum working pressure / 4000 PSI (276 bar) minimum burst pressure
- Operating temperature of -22° to +203° F (-30° to +95° C)
- Nylon, veneer-lined hose for low permeation applications meeting EPA requirements
- Double-barrier design of black, polychloroprene rubber with braided aramid yarn for additional permeation protection and strength
- Quality brass fittings to ensure longer hose life and safety
- Available with 1/4" & 5/16" - Straight/45°/90° FFL Fittings

**Approved for the following refrigerants:** R12, R22, R134a, R410A, R414A, R500, R502, FR1GC-FR12, R11, R113, R114, R123, R401A, R401B, R402A, R402B, R404A, R407A, R407B, R407C, R408A, R409A, R507, R32, R454B



Standard Fitting

## GLOBESAFE STANDARD HOSES

### GlobeSafe 1/4" Standard Hose

Length (In.)	NRP Part No.			
	Red	Blue	Yellow	3-Pak
36	N36R	N36B	N36Y	N36RBY
48	N48R	N48B	N48Y	N48RBY
60	N60R	N60B	N60Y	N60RBY
72	N72R	N72B	N72Y	N72RBY
96	N96R	N96B	N96Y	N96RBY
144	N144R	N144B	N144Y	-
300	N300R	N300B	N300Y	-
600	N600R	N600B	N600Y	-

### GlobeSafe 3/8" Standard Hose

Length (In.)	NRP Part No.			
	Red	Blue	Yellow	3-Pak
36	N3836R	N3836B	N3836Y	N3836RBY
48	N3848R	N3848B	N3848Y	N3848RBY
60	N3860R	N3860B	N3860Y	N3860RBY
72	N3872R	N3872B	N3872Y	N3872RBY
96	N3896R	N3896B	N3896Y	N3896RBY
144	N38144R	N38144B	N38144Y	-
300	N38300R	N38300B	N38300Y	-
600	N38600R	N38600B	N38600Y	-

*\*Consult NRP for custom lengths and fittings on all 1/4" and 3/8" hoses*



## GLOBESAFE POSITIVE SHUT-OFF HOSES

- Full flow, in-line ball valve
- 8" hose length from ball-valve to fitting for easy accessibility



In-line Ball-Valve Attachment

### GlobeSafe 1/4" Positive Shut-Off

Length (In.)	NRP Part No.			
	Red	Blue	Yellow	3-Pak
36	NBV36R	NBV36B	NBV36Y	NBV36RBY
48	NBV48R	NBV48B	NBV48Y	NBV48RBY
60	NBV60R	NBV60B	NBV60Y	NBV60RBY
72	NBV72R	NBV72B	NBV72Y	NBV72RBY
96	NBV96R	NBV96B	NBV96Y	NBV96RBY

### GlobeSafe 3/8" Positive Shut-Off

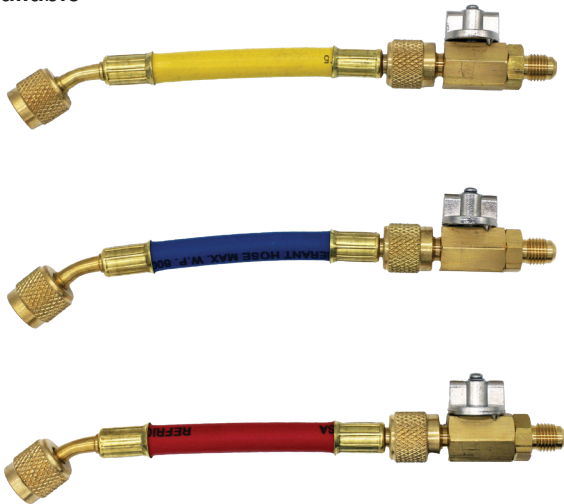
Length (In.)	NRP Part No.			
	Red	Blue	Yellow	3-Pak
36	NBV3836R	NBV3836B	NBV3836Y	NBV3836RBY
48	NBV3848R	NBV3848B	NBV3848Y	NBV3848RBY
60	NBV3860R	NBV3860B	NBV3860Y	NBV3860RBY
72	NBV3872R	NBV3872B	NBV3872Y	NBV3872RBY
96	NBV3896R	NBV3896B	NBV3896Y	NBV3896RBY

# PREMIUM REFRIGERANT CHARGING & VACUUM HOSES



## GLOBESAFE BALL VALVE HOSES

- Premium refrigerant charging/vacuum hose with positive shut-off ball valve end
- 1/4" MFL or 1/4" FFL ball valve connections available
- 3/8" MFL or 3/8" FFL ball valve connections available



### GlobeSafe 1/4" Ball Valve Hose

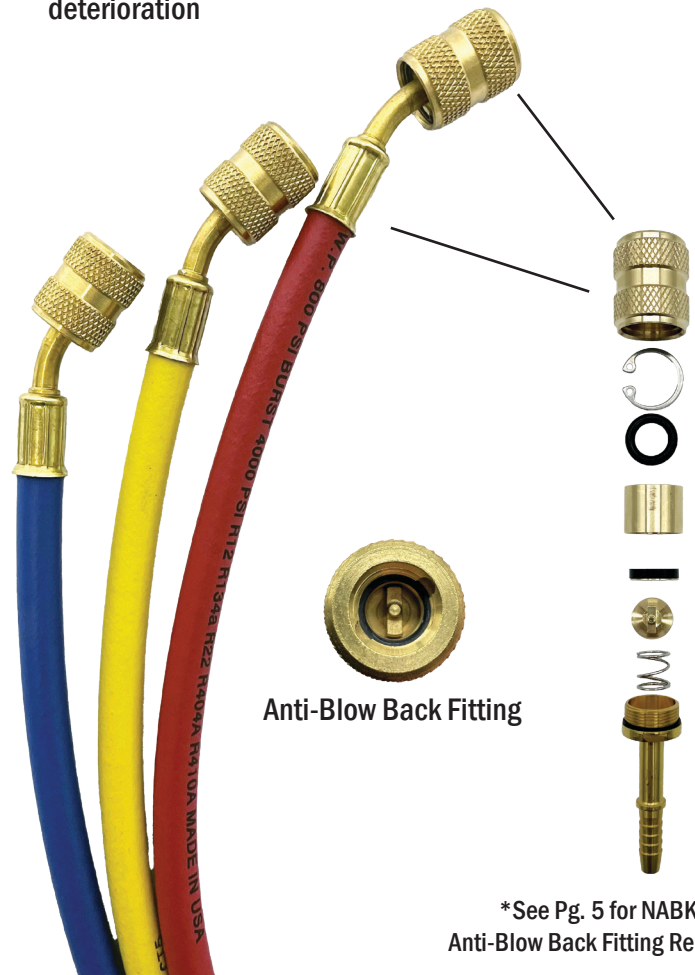
Length (In.)	NRP Part No.			
	Red	Blue	Yellow	3-Pak
6"	N6BVR	N6BVB	N6BVY	N6BVRBY
12"	N12BVR	N12BVB	N12BVY	N12BVRBY
18"	N18BVR	N18BVB	N18BVY	N18BVRBY
24"	N24BVR	N24BVB	N24BVY	N24BVRBY
36"	N36BVR	N36BVB	N36BVY	N36BVRBY
60"	N60BVR	N60BVB	N60BVY	N60BVRBY

### GlobeSafe 3/8" Ball Valve Hose

Length (In.)	NRP Part No.			
	Red	Blue	Yellow	3-Pak
6"	N386BVR	N386BVB	N386BVY	N386BVRBY
12"	N3812BVR	N3812BVB	N3812BVY	N3812BVRBY
18"	N3818BVR	N3818BVB	N3818BVY	N3818BVRBY
24"	N3824BVR	N3824BVB	N3824BVY	N3824BVRBY
36"	N3836BVR	N3836BVB	N3836BVY	N3836BVRBY
60"	N3860BVR	N3860BVB	N3860BVY	N3860BVRBY

## GLOBESAFE ANTI-BLOW BACK HOSES

- 1/4" premium refrigerant charging/vacuum hose with anti-blow back fittings
- Low-loss, 45° fittings trap refrigerant, eliminating venting and finger burns
- Knurled nut for easy accessibility in tight workspaces
- Super-neoprene gaskets for long-life, slow deterioration



Anti-Blow Back Fitting

\*See Pg. 5 for NABKIT Anti-Blow Back Fitting Repair Kit

### GlobeSafe 1/4" Anti-Blow Back Hose

Length (In.)	NRP Part No.			
	Red	Blue	Yellow	3-Pak
36	NAB36R	NAB36B	NAB36Y	NAB36RBY
48	NAB48R	NAB48B	NAB48Y	NAB48RBY
60	NAB60R	NAB60B	NAB60Y	NAB60RBY
72	NAB72R	NAB72B	NAB72Y	NAB72RBY
96	NAB96R	NAB96B	NAB96Y	NAB96RBY

\*Consult NRP for custom lengths and fittings on all 1/4" and 3/8" hoses



# THERMOPLASTIC, PRESSURE CONTROL & CO2 REFRIGERANT HOSE

## THERMOPLASTIC HOSES

- All assemblies and components made in USA
- 2mm Thermoplastic Pressure Control Hose
- 1000 PSI Working Pressure / 5000 PSI Burst Pressure rating
- 1/4" Str. x 45°, 1/4" 90° x 45° Available Fittings
- Max Temperature: -40°F -to 266°F
- Oil and UV Resistant

Approved for the following refrigerants: R507A, R404A, R404C, R410A, R407A, R407C, R134A, R22, R32, R454B



### Thermoplastic Hose

Part No.	Description
NTPH8RBY1	8" 2MM RBY Kit Str. x 35"
NTPH12RBY1	12" 2mm RBY Kit, Str. x 35"
NTPH18RBY1	18" 2mm RBY Kit, Str. x 35"
NTPH18	18" 2mm Thermoplastic Hose
NTPH24	24" 2mm Thermoplastic Hose
NTPH30	30" 2mm Thermoplastic Hose
NTPH36	36" 2mm Thermoplastic Hose
NTPH48	48" 2mm Thermoplastic Hose
NTPH60	60" 2mm Thermoplastic Hose
NTFH18	18" 5mm Black Control Hose
NTFH24	24" 5mm Black Control Hose
NTFH30	30" 5mm Black Control Hose
NTFH36	36" 5mm Black Control Hose
NTFH48	48" 5mm Black Control Hose
NTFH60	60" 5mm Black Control Hose

*\*Consult NRP for custom lengths and fittings on all 1/4" and 3/8" hoses*

## CO2 CONTROL HOSES

- All assemblies and components made in USA
- 5mm CO2 Control Hose
- 2250 PSI Working Pressure / 6750 PSI Burst Pressure rating
- 1/4" Str. x 45°, 1/4" 90° x 45° Available Fittings
- Max Temperature: -40°F -to 266°F
- Oil and UV Resistant
- Approved for R744 (CO2)



### CO2 Control Hose

Part No.	Description
NC02H18	18" CO2 (R744) Hose
NC02H24	24" CO2 (R744) Hose
NC02H30	30" CO2 (R744) Hose
NC02H36	36" CO2 (R744) Hose
NC02H48	48" CO2 (R744) Hose
NC02H60	60" CO2 (R744) Hose

## HEAVY DUTY PRESSURE CONTROL HOSES

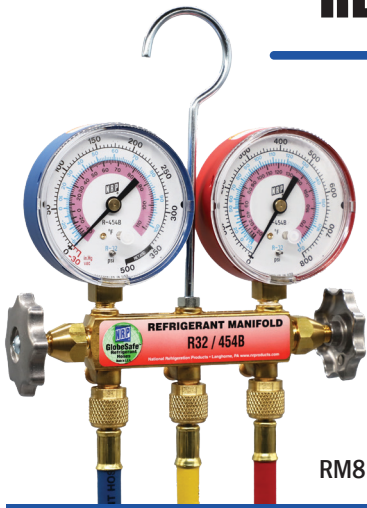
- All assemblies and components made in USA
- Stainless Steel Refrigerant Hose
- 600 PSI Working Pressure / 3000 PSI Burst Pressure rating
- 90° x Str., 1/4" FFL Available Fittings
- Max Temperature: -99°F -to 500°F



### Pressure Control Hose

Part No.	Description
NPCH18	18" Pressure Control Hose
NPCH24	24" Pressure Control Hose
NPCH30	30" Pressure Control Hose
NPCH36	36" Pressure Control Hose
NPCH48	48" Pressure Control Hose
NPCH60	60" Pressure control Hose

# REFRIGERANT MANIFOLDS & GAUGES



RM8

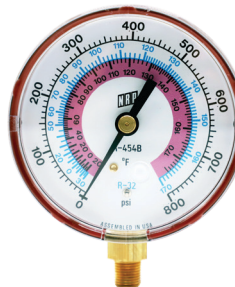
- All assemblies made in USA
- Forged brass body with metal valve handles
- Hose anchors forged at 45°
- Full porting for maximum capacity
- Heavy-duty swivel hook
- Vibration-free gauges for minimal needle movement, accurate reading
- Manifold Kits included with 1/4" FFL x 1/4" FFL - 45° bend

## GlobeSafe Refrigerant Manifolds

Manifold Only	Manifold & 36" Hose Kit	Manifold & 60" Hose Kit	Refrigerants
RM2	RM236	RM260	R22/R134A/R404A
RM3	RM336	RM360	R410A
RM4	RM436	RM460	R22/R404A/R410A
RM5	RM536	RM560	R22/R407A/R407C
RM6	RM636	RM660	R22/R407C/R410A
RM7	-	-	R290A/R600A
RM8	RM836	RM860	R32/R454B
R3M2	R3M236	R3M260	R22/R134A/R404A
R3M4	R3M436	R3M460	R22/R404A/R410A
RM1	-	-	Replacement Manifold Bar

## REPLACEMENT GAUGES

- Replacement analog gauges for manifold offering with 1/8" Female NPT thread
- 2" Series gauges accuracy is within 2-3% of true reading
- 3" Series gauges accuracy is within 1% of true reading



N3012



N3013

## GlobeSafe Replacement Gauges

High Side, Red	PSI Range	Low Side, Blue	PSI Range	Refrigerants
N2003	0-500	N2002	30" WC - 0 - 120	R22/R134A/R404A
N2004	0-800	N2005	30" WC - 0 - 250	R22/R407A/R410A
N2006	0-800	N2007	30" WC - 0 - 500	R410A
N2008	0-800	N2009	30" WC - 0 - 250	R22/R404A/R410A
N2010	0-500	N2011	30" WC - 0 - 250	R22/R407A/R407C
N3G02	0-600	N3G03	30" WC - 0 - 250	R290A/R600A
N3000	0-800	N3001	30" WC - 0 - 500	R22/R404A/R410A
N3002	0-500	N3003	30" WC - 0 - 120	R22/R134A/R404A
N3012	0-800	N3013	30" WC - 0 - 350	R32/R454B



# REFRIGERANT HOSE ACCESSORIES

## VALVES, HOSE ADAPTERS & REPAIR KITS

### SHUT-OFF VALVES



NBV14FM



NBV14MM

- Compact design shut-off ball valves for ease of application
- Connect to any 1/4" or 3/8" FFL hose fitting
- Allows for ease of tank and unit switching
- Excellent for maintaining vacuum integrity
- Prevents unnecessary venting and finger burns

### Shut-Off Valves, 1/4" & 3/8"

NRP Part No.	Description
NBV14MM	1/4" MFL x 1/4" MFL
NBV14FM	1/4" MFL x 1/4" FFL
NBV38MM	3/8" MFL x 3/8" MFL
NBV38FM	3/8" MFL x 3/8" FFL

### ANTI-BLOW BACK HOSE ADAPTERS



NABS



NAB51645



NAB90

- Low-loss fittings eliminate refrigerant venting and finger burns
- Available in 45°, 90° and Straight fitting sizes
- Knurled nut for easy access in tight workspaces
- Super-neoprene gaskets for long life, slow deterioration

### ABB Adapters, 1/4" & 5/16"

NRP Part No.	Connection
NABS	Straight Adapter, 1/4" FFL x 1/4" MFL
NAB45	45° Adapter, 1/4" FFL x 1/4" MFL
NAB90	90° Adapter, 1/4" FFL x 1/4" MFL
NAB516S	Straight Adapter, 5/16" FFL x 1/4" MFL
NAB51645	45° Adapter, 5/16" FFL x 1/4" MFL
NAB51690	90° Adapter, 5/16" FFL x 1/4" MFL

### STANDARD HOSE ADAPTERS



### Standard Hose Adapters, 5/16"

NRP Part No.	Connection
N516S	Straight Adapter, 5/16" FFL x 1/4" MFL
N51645	45° Adapter, 5/16" FFL x 1/4" MFL
N51690	90° Adapter, 5/16" FFL x 1/4" MFL

### HOSE REPAIR KITS & ACCESSORIES



NABKIT



NH05001



NH05007



NH06KIT

### Hose Repair Kits & Accessories

Repair Kit	Description	Quantity
NH06KIT	3/8" Seal Gasket	10
	1/4" Seal Gasket	10
	Depressor	10
	3/8" Finger Tight O-Ring Cap	2
	1/4" Finger Tight O-Ring Cap	6
	Valve Core	5
	Plastic Valve Core Tool	2
NABORING	Replacement O-Ring, ABB Fittings	5
NABKIT	Anti-Blow Back Fitting Repair Kit	7
Accessory	Description	Quantity
NH05001	1/4" Hose Gasket	10
NH01013	3/8" Hose Gasket	10
NH01012	1/2" Hose Gasket	10
NH03016	1/4" Valve Cores	5
NH03016-25	1/4" Valve Cores	25
NH05007	1/4" Hose Core Depressor	10

# REFRIGERANT HOSE ADAPTERS



## NQC14 QUICK COUPLER



- 1/4" FML to 1/8" NPT Female adapter
- Adapts to standard 1/8" NPT gauge for quick pressure check
- Traps refrigerant immediately upon disconnection

NQC14 Quick Coupler		
NRP Part No.	Connection	Description
NQC14	1/4" QC x 1/8" NPT Female	Quick Connect Gauge Adapter, 1/4" QC x 1/8" Female Thread

## A2LA TANK ADAPTER



- 1/4" SAE LH FFL connection allows easy attachment to A2L Refrigerant cylinders
- 1/4" SAE MFL connection allows attachment to refrigerant hose and other service equipment

A2LA Tank Adapter		
NRP Part No.	Connection	Description
A2LA	1/4" SAE LH FFL x 1/4" SAE MFL w/Gasket	Left-handed thread cylinder adapter for A2L refrigerants

# RECOVERY CYLINDERS

**Standard Cylinders For Use With:**  
R11, R12, R22, R113, R114, R134a, R500, R502 & Blends

**Very High Pressure Cylinders For Use With:**  
R13, R23, R503

All NRP recovery cylinders meet ARI guidelines and DOT specifications.

It is important to evacuate the recovery cylinders and purge hoses to avoid introducing non-condensables in cylinder, which would increase discharge pressure. A separate cylinder must be used for each type of refrigerant to avoid cross-contamination.

**Caution:** For safety reasons it is very important to fill all cylinders by weight in accordance with the cylinder supplier's instructions & ARI guidelines.

- Do not fill more than 80% cylinder rated capacity
- Do not mix different refrigerants in one cylinder
- Always wear rubber gloves and safety goggles when transferring refrigerant
- Always use cylinders approved for recovery.
- Cylinder for use with R410A must be DOT spec 4BA400
- NC30, NC30U, NC50, NC50U are approved for R410A



*\*Consult NRP for all orders & specifications*



# HEAVY DUTY PREMIUM REFRIGERANT/VACUUM HOSES

- 1/4", 3/8" and 1/2" premium heavy-duty vacuum hose
- 1/4" and 3/8" hose rated @ 4000 PSI (276 bar) min. burst pressure and 800 PSI (55 bar) max. working pressure
- 1/2" hose rated @ 3200 PSI (220 bar) min. burst pressure and 640 PSI (44 bar) max. working pressure

**Approved for the following refrigerants:** R12, R22, R134a, R410a, R414A, R500, R502, FR1GC-FR12, R11, R113, R114, R123, R401A, R401B, R402A, R402B, R404A, R407A, R407B, R407C, R408A, R409A, R507, R32, R454B

## HEAVY DUTY STANDARD HOSES



- Designed with leading-edge evacuation technology, utilizing vacuum conductance science
- NRP Heavy-Duty Vacuum hoses will dehydrate a 5-ton system 8-10x faster than standard 1/4" hose

GlobeSafe Heavy Duty Standard Hoses			
Length (In.)	NRP Part No.		
	1/4"	3/8"*	1/2"*
36	NHD1436	NHD3836S	NHD1236S
48	NHD1448	NHD3848S	NHD1248S
60	NHD1460	NHD3860S	NHD1260S
72	NHD1472	NHD3872S	NHD1272S
96	NHD1496	NHD3896S	NHD1296S
144	NHD14144	NHD38144S	NHD12144S
300	NHD14300	NHD38300S	NHD12300S
600	NHD14600	NHD38600S	NHD12600S
900	NHD14900	NHD38900S	NHD12900S
1200	NHD141200	NHD381200S	NHD121200S

*\*Consult NRP for custom lengths and fittings on all 1/4" and 3/8" hoses*

## HEAVY DUTY POSITIVE SHUT-OFF HOSES

- Heavy Duty, premium refrigerant charging/vacuum hose with in-line positive shut-off ball valve attachment
- 8" hose length from ball-valve to fitting for easy accessibility



GlobeSafe Heavy Duty Positive Shut-Off				
Length (In.)	NRP Part No.			
	1/4"	3/8"*	1/2"*	
36	NBV36R	NBV36B	NBV36Y	NBV36RBY
48	NBV48R	NBV48B	NBV48Y	NBV48RBY
60	NBV60R	NBV60B	NBV60Y	NBV60RBY
72	NBV72R	NBV72B	NBV72Y	NBV72RBY
96	NBV96R	NBV96B	NBV96Y	NBV96RBY

## HEAVY DUTY BALL VALVE HOSES

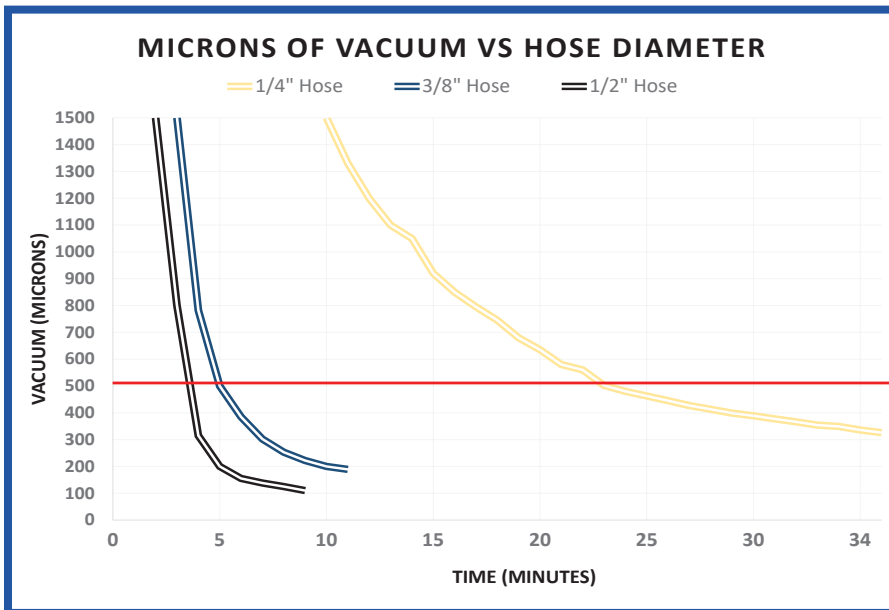


GlobeSafe Heavy Duty Standard Hoses			
Length (In.)	NRP Part No.		
	1/4"	3/8"*	1/2"*
6	NHD146BV	NHD386BV	
12	NHD1412BV	NHD3812BV	
18	NHD1418BV	NHD3818BV	
24	NHD1424BV	NHD3824BV	
36	NHD1436BV	NHD3836BV	
60	NHD1460BV	NHD3860BV	
72	NHD1472BV	NHD3872BV	

# HEAVY DUTY PREMIUM REFRIGERANT/VACUUM HOSES



## LAW OF CONDUCTANCE - ACHIEVE FASTER, DEEPER VACUUMS



The graph to the left shows test results analyzing vacuum levels vs. pull down times using a variety of different connection sizes.

This data proves that using 3/8" or 1/2" hose and connections can greatly decrease the time it takes to fully evacuate a system.

Utilizing NRP GlobeSafe 3/8" or 1/2" Heavy Duty Vacuum Hose can help achieve deep vacuums 5-6 times quicker than conventional 1/4" hoses.

Test performed at 70° with a 55% RH.



## GLOBESAVER GVP8SP VACUUM PUMP

- 8 CFM, 2 Stage Vacuum Pump
- 15 micron vacuum rating
- Ignition Proof, Sparkless operation
- BLDC Motor
- Ergonomic handle with factory-welded lift ring
- Easy access 1/4", 3/8" & 1/2" inlet ports
- 1720 RPM @ 60 HZ
- Super-Lite construction, Only 22 lbs

GlobeSaver GVP8SP Vacuum Pump	
Vacuum Pump Specifications	GVP8SP
Free Air Displacement (CFM)	8
Stages	2 Stage Rotary Vanes
Field Blankoff	15 Microns
Intake Male Flare (In.)	1/4"x3/8"x1/2"
Horsepower	1/4
RPM	1720 @ 60 HZ
Voltage	115
Oil Capacity	22.6 Oz.
Length (In.)	14
Width (In.)	5.71
Height (In.)	10.5
Unit Weight (lbs)	22





# LOBESAVER VACUUM PUMPS

**GVP3H**



**GVP6H**



**GVP12H**



- 1/4" x 3/8" x 1/2" MFL Inlet Ports
- 3, 6, 8 & 12CFM available units
- Two Stage Design: Starts pump at lower pressure to pull a deeper vacuum
- Ergonomic sure-grip handle
- High vacuum rating, 15 microns
- Gas Ballast Feature: Helps keep oil clean by reducing condensation of moisture

GlobeSaver Vacuum Pumps			
Vacuum Pump Specifications	GVP3H	GVP6H	GVP12H
Free Air Displacement (CFM)	3	6	12
Stages	2 Stage Rotary Vanes	2 Stage Rotary Vanes	2 Stage Rotary Vanes
Field Blankoff	15 Microns	15 Microns	15 Microns
Intake Male Flare (In.)	1/4" MFL x 3/8" MFL	1/4" MFL x 3/8" MFL	3/8" MFL x 1/2" MFL
Horsepower	1/4	1/2	1/2
RPM	<b>1720 @ 60 HZ</b>	<b>1440 @ 50 Hz, 1730 @ 60 HZ</b>	1440 @ 50 Hz, 1730 @ 60 HZ
Voltage	115	115/220	115/220
Oil Capacity	14 Oz.	34 Oz.	34 Oz.
Length (In.)	14	16.93	18.89
Width (In.)	<b>5.71</b>	<b>5.71</b>	5.71
Height (In.)	10.5	10.43	11.81
Unit Weight (lbs)	23	31	39

# FLUID TRANSFER PUMPS



**NFP NFP250MAX**

- For use with oil charging, oil recovery & fluid transfer
- No need to shut down the system for charging
- Effective in removal of oil from the system using the reverse process hose.

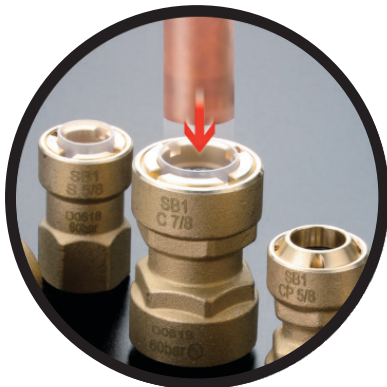
Globesafe Oil Pumps		
Features	NFP	NFP250MAX
Back-Pressure Resistance	200 PSI	250 PSI
Fluid Transfer (Per Stroke)	2.6 Oz.	3.8 Oz.
Connection Size	1/4" MFL	3/8" or 1/4" MFL
Container Compatibility	Fits all 1, 2-1/2 & 5 gallon containers	
Oil Compatibility	Alkyl-benzene, Polyester, Mineral, Polyvinyl Ether & other Synthetic Oils	



## QUICK CONNECT REFRIGERANT FITTINGS

### FEATURES

- Push to Connect Technology  
No Brazing, No Tools, No Nitrogen Purge
- 1/4" - 7/8" Sizes
- For Refrigerants, Glycol & Non-Portable Water
- Approved for use with Hard & Soft Copper (1/4" - 7/8" Type ACR, M, L & K)
- Approved for the following Refrigerants:  
R134a, R404A, R290, R407A, R600a, R507, R22, R410A, R32, R407C



Push To Connect Operation  
No Brazing, No Tools  
No Hot Work Safety Concerns

### Product Specifications

Parameters	Capability
Maximum Rated Pressure (MRP)	870 PSI / 60 BAR
Burst Pressure Rating (Minimum)	3600 PSI / 250 BAR
Vacuum Capacity Rating	30 Microns
Continuous Operating Temperature	250° F / 121° C
Vibration Resistance Rating	UL 1963



1/4" - 7/8" - COUPLERS · FLARES · ELBOWS · REDUCERS

#### COUPLERS

1/4" - 7/8" Fittings Available

COUPLING



COUPLING REDUCER



#### ELBOWS

1/4" - 7/8" Fittings Available

ELBOW



ELBOW REDUCER



#### FLARE ADAPTER

1/4" - 7/8" Fittings Available

FLARE ADAPTER



#### 45° ELBOW

1/4" - 7/8" Fittings Available

45° ELBOW



#### BALL VALVE

1/4" - 7/8" Fittings Available

BALL VALVE





NATIONAL  
REFRIGERATION  
PRODUCTS

For More Quality HVACR Products  
Visit [www.nrproducts.com](http://www.nrproducts.com)



National Refrigeration Products  
985 Wheeler Way, Langhorne, PA 19047  
Phone: 215-638-8909  
Email: [info@nrproducts.com](mailto:info@nrproducts.com)  
[www.nrproducts.com](http://www.nrproducts.com)